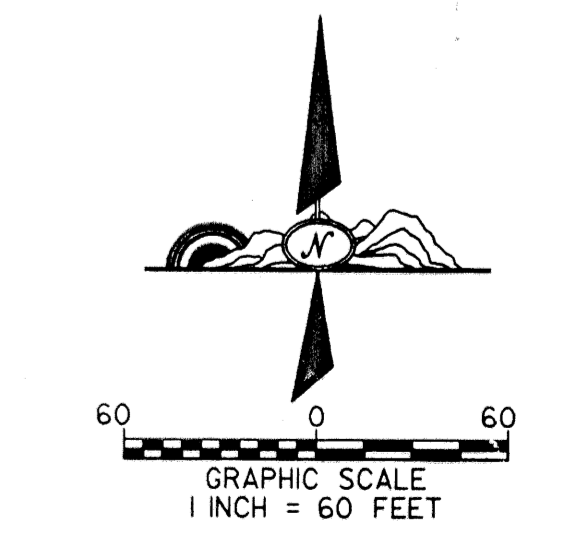
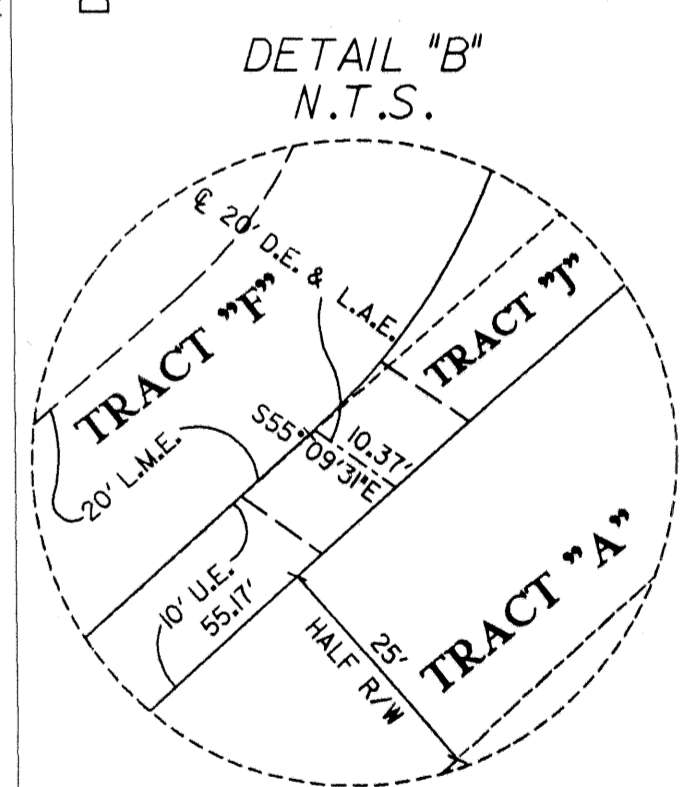
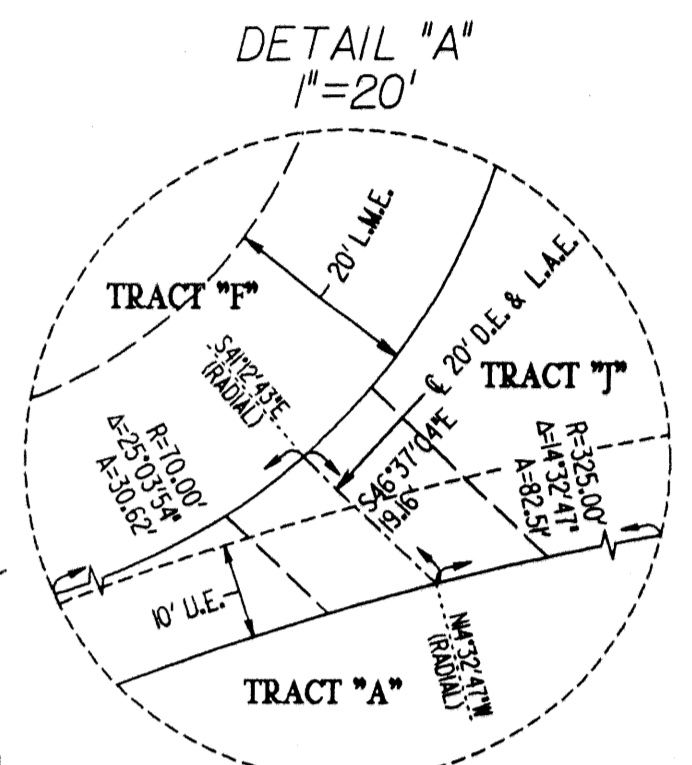
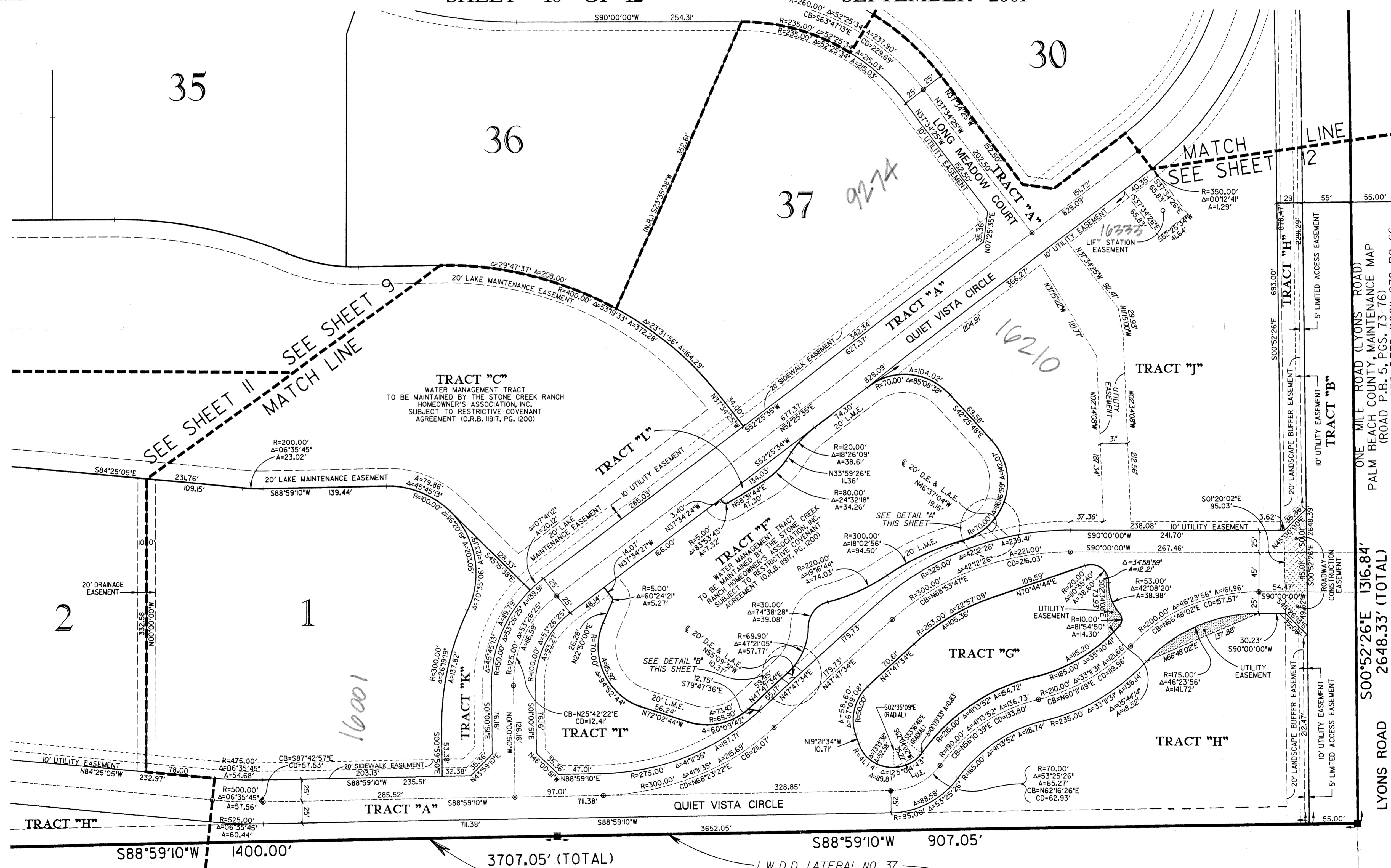


# KENCO RANCH

BEING A REPLAT OF A PART OF TRACTS 1, 2, 3, 4, 5, 6, 7, 8, 41, 42, AND ALL OF TRACTS 25, 26, 27, 28, 29, 30, 31, 32, 33, 34, 35, 36, 37, 38, 39, 40, 54, 55, 56, 57, 58, 59, 60, 61, 62, 63, AND 64, PALM BEACH FARMS CO. PLAT NO. 1, AS RECORDED IN PLAT BOOK 2, PAGES 26 THRU 28 OF THE PUBLIC RECORDS OF PALM BEACH COUNTY, FLORIDA, SITUATED IN SECTION 30, TOWNSHIP 46 SOUTH, RANGE 42 EAST, PALM BEACH COUNTY, FLORIDA  
SHEET 10 OF 12  
SEPTEMBER 2001

STATE OF FLORIDA } S.S.  
COUNTY OF PALM BEACH }  
THIS PLAT WAS FILED FOR  
RECORD AT \_\_\_\_\_ DAY OF  
THIS \_\_\_\_\_ MO., 2001 AND  
DULY RECORDED IN PLAT BOOK  
\_\_\_\_\_ ON PAGES \_\_\_\_\_ THRU  
\_\_\_\_\_  
DOROTHY H. WILKEN, CLERK  
CIRCUIT COURT  
BY: \_\_\_\_\_ DC



SUBDIVISION KENCO RANCH  
BOOK 93 PAGE 202  
FLOOD MAP # 215A  
ZONING ALR  
SE 99-12-14  
TAG 7163  
PUD NAME

**CAULFIELD & WHEELER, INC.**  
Consulting Engineers - Land Planners - Surveyors  
7301A West Palmetto Park Road - Suite 100A  
Boca Raton, Florida 33433 (561) - 392-1991

THIS INSTRUMENT WAS PREPARED BY DAVID P. LINDLEY IN THE OFFICES OF CAULFIELD AND WHEELER, INC., 7301A PALMETTO PARK ROAD, SUITE 100A BOCA RATON, FLORIDA 33433.

SCALE FACTOR: L0000206

SECTION 30, TOWNSHIP 46 SOUTH,  
RANGE 42 EAST  
THE PALM BEACH FARMS CO.  
PLAT NO. 1  
(PLAT BOOK 2, PAGE 26-28)